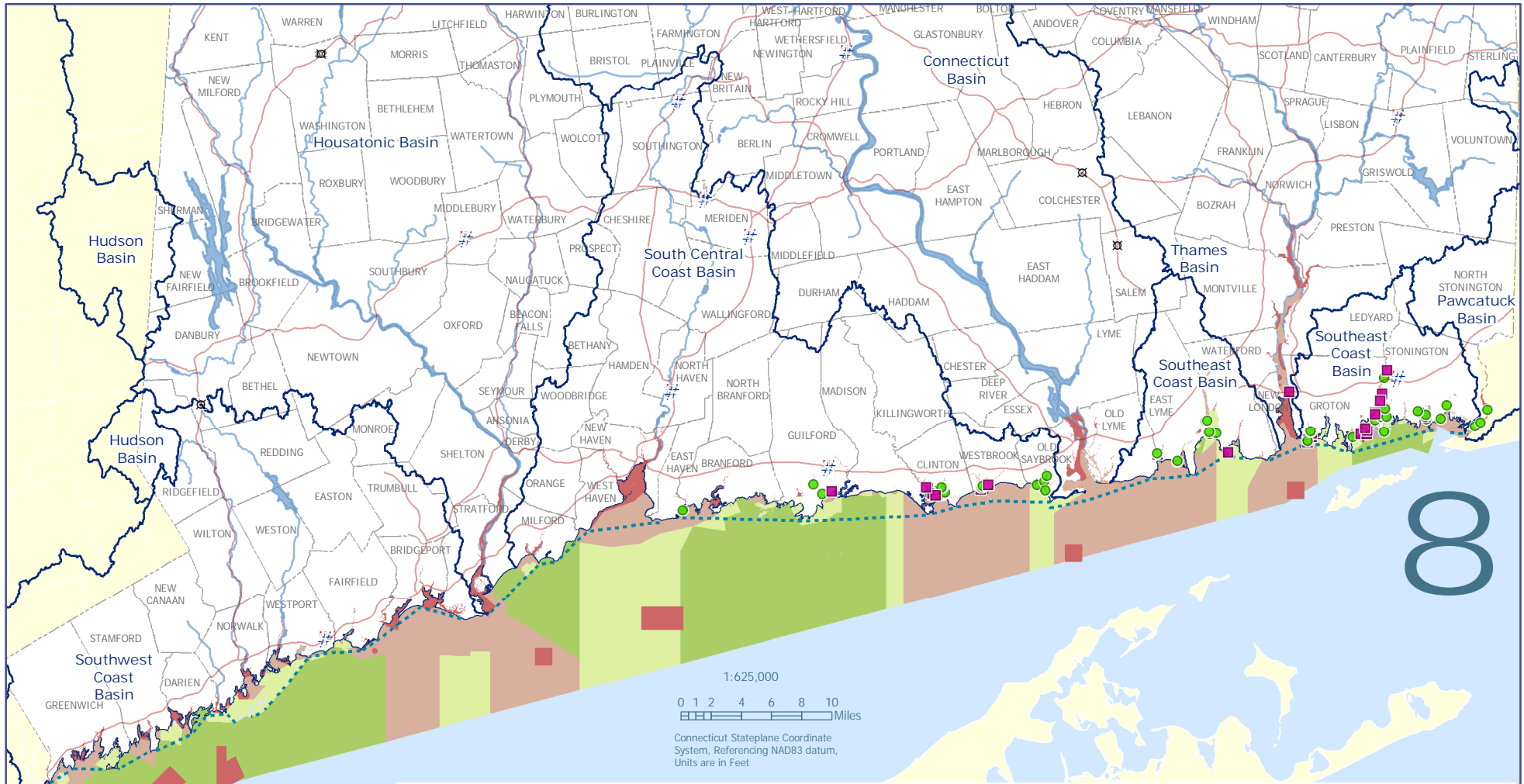


Connecticut: Classifications of Shellfish Growing Areas



1:625,000
 0 1 2 4 6 8 10 Miles
 Connecticut Stateplane Coordinate System, Referencing NAD83 datum, Units are in Feet

8

Data Sources:
 Connecticut Department of Environmental Protection:
 Major Basins, Shellfish Area Classifications-
 Marinas, and Jurisdiction Line Data from 2005

UCONN Map and Geographic Information Center:
 Town boundaries

- Shellfish Area Jurisdiction Line
 - State-Town Jurisdiction Boundary between State and Town Jurisdiction over Shellfish Beds
- Shellfish Area Marina Classifications
 - § Conditionally Restricted-Relay
 - * Prohibited

Shellfish Area Classifications

- Approved Areas - Growing and Harvesting of Shellfish for Consumption Allowed
- Conditionally Approved - Areas may be Temporarily Closed for Growing and Harvesting of Shellfish for Consumption
- Restricted-Relay/Depuration and Conditionally Restricted-Relay/Depuration - Area may be used for the Relaying of Shellfish to a Depuration Plant for Controlled Purification or to Designated Beds for Natural Purification
- Restricted-Relay and Conditionally Restricted-Relay - Operations may be Licensed to Relay Shellfish to Designated Beds in Approved or Conditionally Approved Areas for Natural Purification; Minimum Purification Period is 14 consecutive days; Classification Requires Sanitary Surveys and Water Quality Testing
- Prohibited - Shellfish Harvesting for Any Purpose is Prohibited; Except Licensed Depletion or Aquaculture Operations (such as Seed Oystering)

